



Referee: PANTHER Anne
 Umpires: RODRIGUEZ Toni / MUTAPCIC Armin
 Commissioner: JANZEN Sascha

MBC, Stadthalle Weißenfels, SO 6 JAN 2019, 15:00, Game-ID: 22177

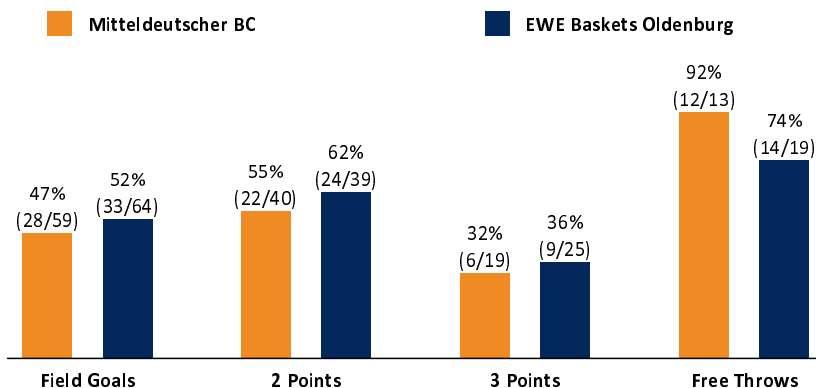
	Q1		Q2		Q3		Q4	
MBC	17	17	24	41	14	55	19	74
OLD	24	24	19	43	25	68	21	89

MBC - Mitteldeutscher BC (Coach: SCEPANOVIC Aleksandar)

No.	Name	Min	PTS	2 Points	3 Points	Field Goals	Free Throws	OR	DR	TR	AS	ST	TO	BS	SB	PF	FD	EFF	+/-	
*0	MOORE Lee	23:36	13	5/9 (56%)	1/2 (50%)	6/11 (55%)			5	5	2		1			3	14	-7		
2	FARR James	18:27	4	2/8 (25%)	0/1 (0%)	2/9 (22%)		1	3	4	2		3		2	3	1	0	0	
*5	DARDEN Tremmell	25:00	4	1/3 (33%)	0/1 (0%)	1/4 (25%)	2/2 (100%)		3	3		2	3	1		3	4	-15		
6	BREMBLY David	19:58	11	2/2 (100%)	2/4 (50%)	4/6 (67%)	1/2 (50%)	1	2	3	1	1		1		3	1	14	2	
*7	KERUSCH Sergio	16:41	0	0/2 (0%)	0/1 (0%)	0/3 (0%)			1	1		1	3			4	1	-4	-22	
10	ZYLKA Ferdinand	7:53	2	1/1 (100%)	0/2 (0%)	1/3 (33%)			1	1						1		1	2	
11	GILLE Ferenc	1:36	0															0	4	
*20	NOVAK Jovan	30:58	18	3/5 (60%)	2/2 (100%)	5/7 (71%)	6/6 (100%)	1	1	2	8		2			2	7	24	-18	
21	PETER-McNEILLY Adika	17:13	9	2/2 (100%)	1/6 (17%)	3/8 (38%)	2/2 (100%)		2	2	1		2			2	2	5	-6	
30	BRASE Hans	5:48	0	0/1 (0%)		0/1 (0%)		1		1					1		1	0	-1	
*31	MARELIJA Aleksandar	20:42	13	6/7 (86%)		6/7 (86%)	1/1 (100%)	1	2	3	2					2	1	17	-15	
44	TURUDIC Benedikt	12:08	0						2	2		1	1	1		3		3	1	
Team / Coach								3	2	5					1		5			
Totals			200:00	74	22/40 (55%)	6/19 (32%)	28/59 (47%)	12/13 (92%)	8	24	32	16	5	15	3	3	21	20	83	-15

OLD - EWE Baskets Oldenburg (Coach: DRIJENCIC Miladen)

No.	Name	Min	PTS	2 Points	3 Points	Field Goals	Free Throws	OR	DR	TR	AS	ST	TO	BS	SB	PF	FD	EFF	+/-	
5	HUJIC Haris	13:48	4	2/3 (67%)	0/1 (0%)	2/4 (50%)		1	2	3	1					4		6	5	
*9	TADDA Karsten	24:30	2	1/1 (100%)	0/2 (0%)	1/3 (33%)		1	2	3	5		2			1		6	-9	
*10	MASSENAT Frantz	29:48	11	2/5 (40%)	2/7 (29%)	4/12 (33%)	1/2 (50%)	1	1	2	5	1	2			2	6	8	7	
13	BACAK Marko	6:09	2	1/1 (100%)		1/1 (100%)										2	1	2	-6	
15	KEBEN Marcel	1:36	0						1	1						1		1	-4	
16	ISEMANN Till	DNP																		
19	STOJANOVSKI Vojdan	21:45	7	2/5 (40%)	0/2 (0%)	2/7 (29%)	3/3 (100%)	2	2	4	4	1			2	2	2	11	18	
*23	PAULDING Rickey	30:09	12	1/3 (33%)	3/3 (100%)	4/6 (67%)	1/1 (100%)	1	1	2	4	3	1		1	1		18	24	
*24	MAHALBASIC Rasid	25:57	19	6/10 (60%)	1/2 (50%)	7/12 (58%)	4/7 (57%)		5	5	3	1	2			4	6	18	11	
*33	SCHWETHELM Philipp	28:07	14	2/4 (50%)	2/5 (40%)	4/9 (44%)	4/4 (100%)		7	7		2	2	1		1	4	17	11	
45	BOOTHE Nathan	18:11	18	7/7 (100%)	1/3 (33%)	8/10 (80%)	1/2 (50%)	3	2	5	1	1	1	2		2	1	23	18	
Team / Coach								1	1	2						2				
Totals			200:00	89	24/39 (62%)	9/25 (36%)	33/64 (52%)	14/19 (74%)	10	24	34	23	9	10	3	3	20	20	112	15



MBC	Rebounds OR/DR/TR	OLD
8 / 24 / 32	Assists	10 / 24 / 34
16	Fouls	23
21	Fouls Drawn	20
20	Turnovers	20
15	Steals	10
5	Points in the Paint	9
36	Second Chance Points	34
12	Fast Break Points	14
	Biggest Lead	10
5 (32:27)	Biggest Scoring Run	22 (60:82)
9-0 (26:25)	Lead Changes:	10-0 (6:12)
	Times Tied:	5
		7

EASYS-CREDIT-BBL.DE

Alle offiziellen Statistiken der easyCredit BBL, Daten, Rekorde uvm. gibt es auf easyCredit-BBL.de! News, Stats, Tabelle und Spielplan für unterwegs: Kostenfrei für iOS und Android in der offiziellen Liga-App!

TELEKOMSPORT.DE

Keinen Korb mehr verpassen - Alle Spiele der easyCredit BBL LIVE und in HD! Erleben sie jetzt das größte Basketball-Angebot Deutschlands zuhause und mobil! www.telekom-sport.de

LEGEND
 Min Minutes Played DR Defensive Rebounds AS Assists BS Blocked Shots PF Fouls +/- Plus-Minus-Rating
 DNP Did Not Play OR Offensive Rebounds ST Steals SB Shots Blocked FD Fouls Drawn * Starters
 PTS Points TR Total Rebounds TO Turnovers EFF Efficiency = ((PTS + TR + AS + ST + BS) - ((FGA - FGM) + (FTA - FTM) + TO))