



Referee: STRAUBE Carsten  
 Umpires: SIMONOW Konstantin / MUTAPCIC Armin  
 Commissioner: UMLANDT Ralph

Attendance: 6.000  
 Oldenburg, EWE ARENA, DI 30 APR 2019, 20:30, Game-ID: 22315

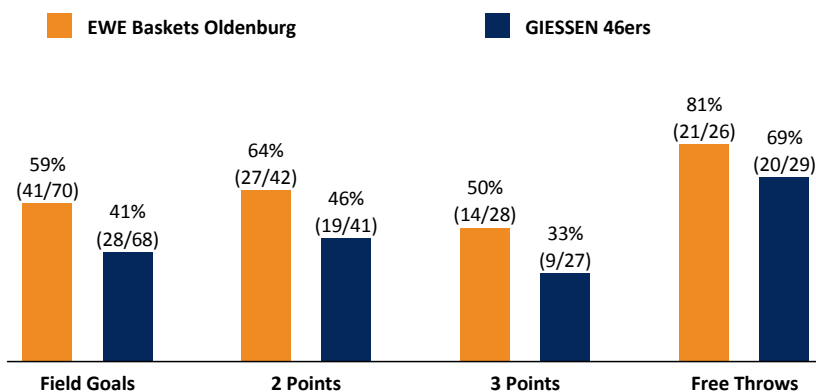
	Q1		Q2		Q3		Q4	
OLD	24	24	35	59	25	84	33	117
GIE	23	23	20	43	23	66	19	85

**OLD - EWE Baskets Oldenburg** (Coach: DRUJENCIC Mladen)

No.	Name	Min	PTS	2 Points	3 Points	Field Goals	Free Throws	OR	DR	TR	AS	ST	TO	BS	SB	PF	FD	EFF	+/-	
*3	CUMMINGS Will	22:25	30	6/8 (75%)	4/4 (100%)	10/12 (83%)	6/8 (75%)	1	3	4	3	1			1	2	7	34	30	
5	HUJIC Haris	10:08	4	1/4 (25%)		1/4 (25%)	2/2 (100%)		3	3		1	1			1	1	4	13	
*9	TADDA Karsten	18:03	5	1/2 (50%)	1/2 (50%)	2/4 (50%)			2	2	2		1			1		6	16	
10	MASSENAT Frantz	22:16	20	7/7 (100%)	1/1 (100%)	8/8 (100%)	3/3 (100%)		3	3	4	2				3	4	29	18	
13	BACAK Marko	3:59	0		0/1 (0%)	0/1 (0%)			2	2								1	8	
15	KEßEN Marcel	9:55	5	2/2 (100%)	0/1 (0%)	2/3 (67%)	1/2 (50%)		1	1						2	1	4	11	
16	ISEMANN Till	3:25	0											1		1		1	-5	
19	STOJANOVSKI Vojdan	19:01	12	2/5 (40%)	2/2 (100%)	4/7 (57%)	2/2 (100%)		3	3	2	1	2			3	1	13	5	
*23	PAULDING Rickey	24:08	16	4/4 (100%)	2/6 (33%)	6/10 (60%)	2/2 (100%)		2	2	2		1				1	15	6	
*24	MAHALBASIC Rasid	28:20	10	2/4 (50%)	1/4 (25%)	3/8 (38%)	3/4 (75%)	2	8	10	11	4	1			5	2	28	20	
*33	SCHWETHELM Philipp	17:11	5		1/3 (33%)	1/3 (33%)	2/2 (100%)	2		2	1	1	1			3	1	6	21	
45	BOOTHE Nathan	21:09	10	2/6 (33%)	2/4 (50%)	4/10 (40%)	0/1 (0%)	1		1	1					3	1	5	17	
Team / Coach								1	1	2								2		
<b>Totals</b>			<b>200:00</b>	<b>117</b>	<b>27/42 (64%)</b>	<b>14/28 (50%)</b>	<b>41/70 (59%)</b>	<b>21/26 (81%)</b>	<b>7</b>	<b>28</b>	<b>35</b>	<b>26</b>	<b>10</b>	<b>7</b>	<b>1</b>	<b>1</b>	<b>24</b>	<b>19</b>	<b>148</b>	<b>32</b>

**GIE - GIESSEN 46ers** (Coach: FREYER Ingo)

No.	Name	Min	PTS	2 Points	3 Points	Field Goals	Free Throws	OR	DR	TR	AS	ST	TO	BS	SB	PF	FD	EFF	+/-	
3	CHAMBERS Siyani	9:21	7	2/3 (67%)	0/1 (0%)	2/4 (50%)	3/5 (60%)				3					2	3	6	-8	
*4	KRAUSHAAR Bjarne	10:28	7	1/2 (50%)	1/3 (33%)	2/5 (40%)	2/2 (100%)		1	1			2			1	3	3	-12	
*6	AGVA Mahir	13:34	7	3/6 (50%)	0/1 (0%)	3/7 (43%)	1/2 (50%)	2	1	3				1		4	1	6	-10	
8	PJANIC Alen	20:15	6	1/4 (25%)	1/3 (33%)	2/7 (29%)	1/1 (100%)		4	4		3	1		1	4	2	7	-12	
11	UHLEMANN Tim	3:51	1	0/1 (0%)	0/2 (0%)	0/3 (0%)	1/2 (50%)						1			1	1	-4	-17	
12	OKPARA Leon	10:09	2				2/2 (100%)	1	1	2							1	4	-14	
13	LISCHKA Benjamin	14:55	5	2/5 (40%)		2/5 (40%)	1/2 (50%)	1	1	2		1				2	2	4	-20	
*23	GORDON Larry	20:18	4	2/2 (100%)		2/2 (100%)		1	3	4	2		2			1		8	-9	
25	JORDAN Jared	20:11	3	0/2 (0%)	1/1 (100%)	1/3 (33%)		1		1	4		2			3		4	-12	
*33	THOMAS Brandon	25:09	5	1/1 (100%)	1/6 (17%)	2/7 (29%)			2	2	6		3			1		5	-20	
50	BELL David	21:36	15	2/4 (50%)	3/4 (75%)	5/8 (63%)	2/2 (100%)	1	3	4	1		2			2	15	-10		
*54	BRYANT John	30:13	23	5/11 (45%)	2/6 (33%)	7/17 (41%)	7/11 (64%)	2	4	6	3		1			9	17	-16		
Team / Coach								3	2	5							5			
<b>Totals</b>			<b>200:00</b>	<b>85</b>	<b>19/41 (46%)</b>	<b>9/27 (33%)</b>	<b>28/68 (41%)</b>	<b>20/29 (69%)</b>	<b>12</b>	<b>22</b>	<b>34</b>	<b>19</b>	<b>4</b>	<b>14</b>	<b>1</b>	<b>1</b>	<b>19</b>	<b>24</b>	<b>80</b>	<b>-32</b>



OLD	GIE
7 / 28 / 35	12 / 22 / 34
26	Rebounds OR/DR/TR
24	Assists
19	Fouls
7	Fouls Drawn
10	Turnovers
40	Steals
7	Points in the Paint
14	Second Chance Points
34 (117:83)	Fast Break Points
13-0 (99:72)	Biggest Lead
	Biggest Scoring Run
	Lead Changes: 1
	Times Tied: 1

EASycREDIT-BBL.DE

Alle offiziellen Statistiken der easyCredit BBL, Daten, Rekorde uvm. gibt es auf easyCredit-BBL.de! News, Stats, Tabelle und Spielplan für unterwegs: Kostenfrei für iOS und Android in der offiziellen Liga-App!

MAGENTA SPORT

Keinen Korb mehr verpassen - Alle Spiele der easyCredit BBL und des MagentaSport BBL Pokals LIVE und in HD! Das größte Basketball-Angebot Deutschlands zuhause und mobil! [www.MagentaSport.de](http://www.MagentaSport.de)

LEGEND

Min Minutes Played    DR Defensive Rebounds    AS Assists    BS Blocked Shots    PF Fouls    +/- Plus-Minus-Rating  
 DNP Did Not Play    OR Offensive Rebounds    ST Steals    SB Shots Blocked    FD Fouls Drawn    \* Starters  
 PTS Points    TR Total Rebounds    TO Turnovers    EFF Efficiency = ((PTS + TR + AS + ST + BS) - ((FGA - FGM) + (FTA - FTM) + TO))