



MHP RIESEN Ludwigsburg 78 : 71

ALBA BERLIN



Referee: FRITZ Clemens
Umpires: REITER Moritz / MADINGER Christof
Commissioner: EICHHORN Christian

Ludwigsburg, MHPArena (4.129Plätze), DI 8 DEZ 2020, 20:30, Game-ID: 25525

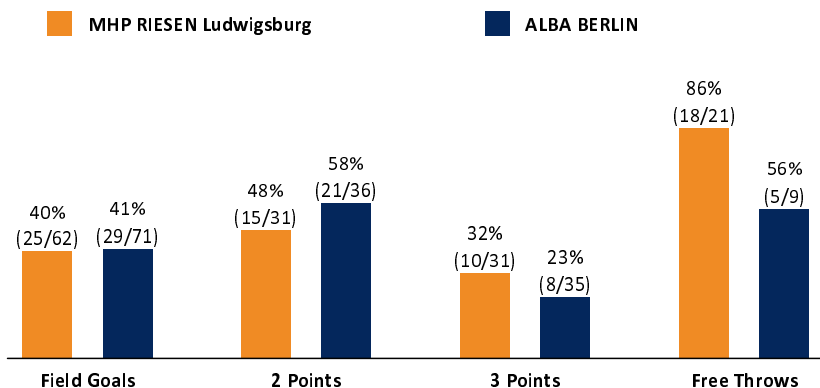
Scoreboard table showing Q1, Q2, Q3, Q4 scores for LUD and BER.

LUD - MHP RIESEN Ludwigsburg (Coach: PATRICK John)

Main player statistics table for Ludwigsburg including columns for No., Name, Min, PTS, 2 Points, 3 Points, Field Goals, Free Throws, and various advanced stats.

BER - ALBA BERLIN (Coach: GARCIA RENESES Alejandro)

Main player statistics table for Alba Berlin including columns for No., Name, Min, PTS, 2 Points, 3 Points, Field Goals, Free Throws, and various advanced stats.



Summary table comparing LUD and BER across various categories like Rebounds, Assists, Fouls, Turnovers, Steals, Points in the Paint, etc.

EASycREDIT-BBL.DE

Alle offiziellen Statistiken der easycCredit BBL, Daten, Rekorde uvm. gibt es auf easycCredit-BBL.de! News, Stats, Tabelle und Spielplan für unterwegs: Kostenlos für iOS und Android in der offiziellen Liga-App!

MAGENTA SPORT

Keinen Korb mehr verpassen - Alle Spiele der easycCredit BBL und des MagentaSport BBL Pokals LIVE und in HD! Das größte Basketball-Angebot Deutschlands zuhause und mobil! www.MagentaSport.de

LEGEND: Min Minutes Played, DR Defensive Rebounds, AS Assists, BS Blocked Shots, PF Fouls, +/- Plus-Minus-Rating, DNP Did Not Play, OR Offensive Rebounds, ST Steals, SB Shots Blocked, FD Fouls Drawn, * Starters, PTS Points, TR Total Rebounds, TO Turnovers, EFF Efficiency = ((PTS + TR + AS + ST + BS) - ((FGA - FGM) + (FTA - FTM) + TO))