



# MHP RIESEN Ludwigsburg 91 : 86 Telekom Baskets Bonn



Referee: BITTNER Steve  
 Umpires: KRÜPER Moritz / THEIS Christian  
 Commissioner: WEICHERT Horst

Attendance: 2.254  
 Ludwigsburg, MHPArena (4.129Plätze), SO 24 OKT 2021, 15:00, Game-ID: 25980

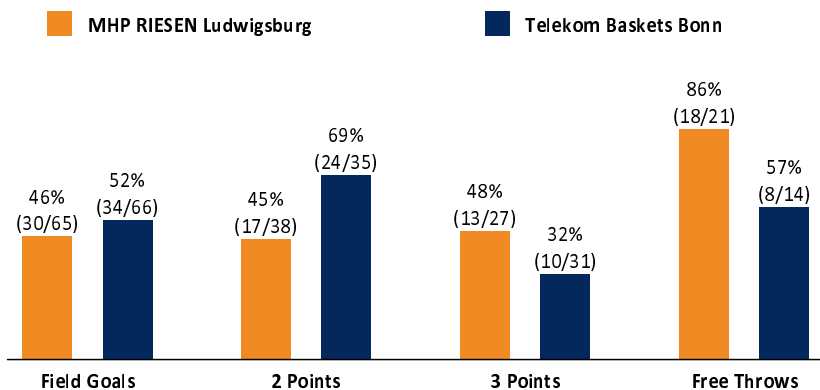
	Q1		Q2		Q3		Q4	
LUD	21	21	19	40	28	68	23	91
BON	18	18	20	38	30	68	18	86

## LUD - MHP RIESEN Ludwigsburg (Coach: PATRICK John)

No.	Name	Min	PTS	2 Points	3 Points	Field Goals	Free Throws	OR	DR	TR	AS	ST	TO	BS	SB	PF	FD	EFF	+/-	
*1	HULLS Jordan	33:55	11	1/1 (100%)	2/5 (40%)	3/6 (50%)	3/3 (100%)	2	2	4	9		1			2	4	20	4	
2	PATRICK Jacob	13:48	6	2/7 (29%)	0/2 (0%)	2/9 (22%)	2/2 (100%)	1		1		1	2		1	2	2	-1	6	
*5	SIMON Justin	34:13	21	5/8 (63%)	1/4 (25%)	6/12 (50%)	8/10 (80%)	1	2	3		1				3	6	17	16	
6	PATRICK Johannes	1:07	0															0	-2	
7	BÄHRE Jonathan	1:14	0											1				1	5	
11	HERZOG Lukas	1:23	0															0	2	
*12	RADEBAUGH Jonah	32:25	24	2/7 (29%)	6/9 (67%)	8/16 (50%)	2/2 (100%)	1	2	3	3	1			2	2	3	23	-6	
13	POLAS BAROLO Yorman	14:57	3		1/3 (33%)	1/3 (33%)		1	1	2	1		1			2	2	3	2	
*18	WOHLFARTH-BOTTERMANN Jonas	18:58	3	1/2 (50%)		1/2 (50%)	1/2 (50%)	2	6	8	1		4			4	4	6	-14	
20	ALKINS Rawlie	21:47	14	3/8 (38%)	2/2 (100%)	5/10 (50%)	2/2 (100%)				4	3	1	1	1		2	16	-3	
*21	DARDEN Tremmell	26:13	9	3/5 (60%)	1/2 (50%)	4/7 (57%)		1	3	4	3	1	2	1		3	2	13	15	
23	WALKER David	DNP																		
Team / Coach								2	3	5			1				4			
Totals			200:00	91	17/38 (45%)	13/27 (48%)	30/65 (46%)	18/21 (86%)	11	19	30	21	7	12	3	4	18	23	102	5

## BON - Telekom Baskets Bonn (Coach: IISALO Tuomas)

No.	Name	Min	PTS	2 Points	3 Points	Field Goals	Free Throws	OR	DR	TR	AS	ST	TO	BS	SB	PF	FD	EFF	+/-	
3	WARD Tyson	16:57	6	3/5 (60%)	0/2 (0%)	3/7 (43%)		1	3	4	1					4		7	4	
*4	GORHAM Justin	28:21	14	5/8 (63%)	1/3 (33%)	6/11 (55%)	1/1 (100%)	1	4	5			1			1	3	13	-11	
6	KESSENS Michael	17:52	5	2/2 (100%)		2/2 (100%)	1/2 (50%)	3		3		1	3			3	1	5	-4	
*9	TADDA Karsten	22:19	5	1/1 (100%)	1/4 (25%)	2/5 (40%)			2	2	2	2	1			1		5	-7	
10	KULVIETIS Saulius	18:33	12	2/2 (100%)	2/5 (40%)	4/7 (57%)	2/3 (67%)	2		2	3	1	1			1	2	13	4	
12	BOWLIN Skyler	20:07	5	1/2 (50%)	1/5 (20%)	2/7 (29%)			3	3	2		2			4	1	3	2	
*20	MORGAN Jeremy	28:58	13	2/2 (100%)	3/5 (60%)	5/7 (71%)			3	3	2			2		3	4	18	-12	
*21	KRATZER Leon	12:19	4	2/3 (67%)		2/3 (67%)	0/1 (0%)	1	1	2		1	2	2	1	4	1	5	-1	
24	HASBARGEN Tim	DNP																		
*33	JACKSON-CARTWRIGHT Parker	34:34	22	6/10 (60%)	2/7 (29%)	8/17 (47%)	4/7 (57%)		6	6	9	1	5		2	2	6	21	0	
Team / Coach								4	3	7			3		1		4			
Totals			200:00	86	24/35 (69%)	10/31 (32%)	34/66 (52%)	8/14 (57%)	12	25	37	19	4	18	4	3	24	18	94	-5



LUD	BON
11 / 19 / 30	Rebounds OR/DR/TR
21	Assists
18	Fouls
23	Fouls Drawn
12	Turnovers
7	Steals
26	Points in the Paint
11	Second Chance Points
11	Fast Break Points
14 (65:51)	Biggest Lead
7-0 (40:36)	Biggest Scoring Run
	Lead Changes: 8
	Times Tied: 8



### EASYCREDIT-BBL.DE

Alle offiziellen Statistiken der easyCredit BBL, Daten, Rekorde uvm. gibt es auf easyCredit-BBL.de! Und für unterwegs: die neue offizielle Liga-App, kostenfrei für iOS und Android.



### MAGENTASPORT.DE

Keinen Korb mehr verpassen - Alle Spiele der easyCredit Basketball Bundesliga und des MagentaSport BBL Pokals live auf MagentaSport.de

**LEGEND**  
 Min Minutes Played    DR Defensive Rebounds    AS Assists    BS Blocked Shots    PF Fouls    +/- Plus-Minus-Rating  
 DNP Did Not Play    OR Offensive Rebounds    ST Steals    SB Shots Blocked    FD Fouls Drawn    \* Starters  
 PTS Points    TR Total Rebounds    TO Turnovers    EFF Efficiency = ((PTS + TR + AS + ST + BS) - ((FGA - FGM) + (FTA - FTM) + TO))