



Referee: PANTHER Anne
 Umpires: BITTNER Steve/ FINGERLING Stefan
 Commissioner: LAUPRECHT Claus-Arwed

Attendance: 500
 Crailsheim, Arena Hohenlohe (3.000 Plätze), SO 2 JAN 2022, 18:00, Game-ID: 26070

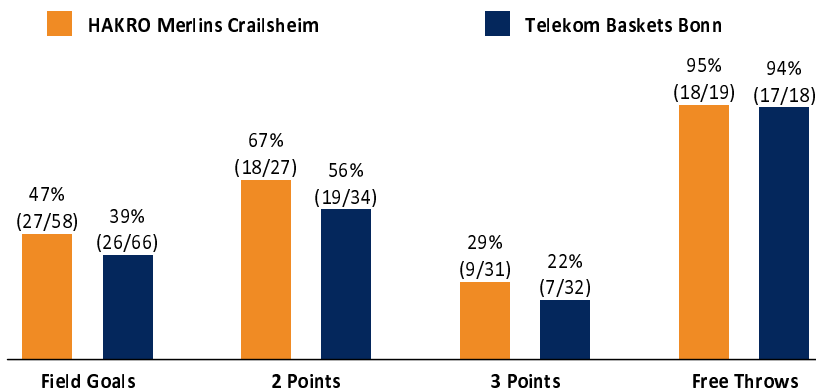
	Q1		Q2		Q3		Q4	
CRA	9	9	28	37	21	58	23	81
BON	26	26	21	47	11	58	18	76

CRA - HAKRO Merlins Crailsheim (Coach: GLEIM Sebastian)

No.	Name	Min	PTS	2 Points	3 Points	Field Goals	Free Throws	OR	DR	TR	AS	ST	TO	BS	SB	PF	FD	EFF	+/-
*0	SHORTS T. J.	35:33	23	8/11 (73%)	0/2 (0%)	8/13 (62%)	7/7 (100%)		3	3	7	2	1	2		3	8	31	17
*1	LEWIS Jaren	27:13	9	2/2 (100%)	0/2 (0%)	2/4 (50%)	5/5 (100%)		4	4	1	1				2	4	13	1
2	SAVAGE Jared	2:46	0													1		0	-8
*3	STUCKEY Maurice	30:15	9	0/1 (0%)	3/12 (25%)	3/13 (23%)			3	3	3	1	1	1		3	3	6	7
5	KOVACEVIC Aleksa	DNP																	
6	LASIS Elias	13:58	6	0/2 (0%)	1/3 (33%)	1/5 (20%)	3/3 (100%)		2	2	2	1	1			1	1	6	-3
8	HARRIS Terrell	16:08	11	1/3 (33%)	3/6 (50%)	4/9 (44%)		2		2		1	1		1	3		8	5
*9	BLECK Fabian	39:10	13	4/4 (100%)	1/3 (33%)	5/7 (71%)	2/2 (100%)	1	2	3	2	2	1			4	1	17	10
11	KINDZEKA Rene	DNP																	
12	KOVACEVIC Dejan	DNP																	
*15	RADOSAVLJEVIC Bogdan	26:00	7	2/3 (67%)	1/3 (33%)	3/6 (50%)		1	2	3	2	1	1			3	2	9	0
34	ARIRIGUZOH Richmond	8:57	3	1/1 (100%)		1/1 (100%)	1/2 (50%)	1		1						2	1	3	-4
Team / Coach									1	1			3			1			-2
Totals		200:00	81	18/27 (67%)	9/31 (29%)	27/58 (47%)	18/19 (95%)	5	17	22	17	9	9	3	1	23	20	91	5

BON - Telekom Baskets Bonn (Coach: IISALO Tuomas)

No.	Name	Min	PTS	2 Points	3 Points	Field Goals	Free Throws	OR	DR	TR	AS	ST	TO	BS	SB	PF	FD	EFF	+/-
3	WARD Tyson	13:50	4	1/2 (50%)		1/2 (50%)	2/2 (100%)	1	3	4			3			3	1	4	-6
*4	GORHAM Justin	12:29	5	1/2 (50%)	1/3 (33%)	2/5 (40%)			2	2			1			2	2	3	-2
6	KESSENS Michael	21:51	14	6/8 (75%)		6/8 (75%)	2/3 (67%)	2	2	4	2		2	1		4	3	16	0
*9	TADDA Karsten	29:17	6	1/1 (100%)	0/3 (0%)	1/4 (25%)	4/4 (100%)	3	1	4	4		3			1	3	8	-6
12	BOWLIN Sklyer	24:20	8	0/1 (0%)	2/6 (33%)	2/7 (29%)	2/2 (100%)	1	2	3	3				1	1	4	9	-2
13	HAWKINS Javontae	11:14	9	2/2 (100%)	1/4 (25%)	3/6 (50%)	2/2 (100%)	1		1	1	1					2	9	1
*20	MORGAN Jeremy	35:07	9	2/4 (50%)	1/9 (11%)	3/13 (23%)	2/2 (100%)	1	7	8	1					4	3	8	-3
*21	KRATZER Leon	18:07	8	4/8 (50%)		4/8 (50%)		5	5	10			3			4	1	11	-3
24	HASBARGEN Tim	DNP																	
*33	JACKSON-CARTWRIGHT Parker	33:45	13	2/6 (33%)	2/7 (29%)	4/13 (31%)	3/3 (100%)		2	2	9		5		2	2	3	10	-4
Team / Coach								6	2	8									8
Totals		200:00	76	19/34 (56%)	7/32 (22%)	26/66 (39%)	17/18 (94%)	20	26	46	20	1	17	1	3	21	22	86	-5



CRA	BON
5 / 17 / 22	Rebounds OR/DR/TR 20 / 26 / 46
17	Assists 20
23	Fouls 21
20	Fouls Drawn 22
9	Turnovers 17
9	Steals 1
34	Points in the Paint 34
6	Second Chance Points 17
11	Fast Break Points 3
5 (67:62)	Biggest Lead 17 (9:26)
10-0 (53:53)	Biggest Scoring Run 10-0 (9:26)
	Lead Changes: 5
	Times Tied: 5



EASYCREDIT-BBL.DE

Alle offiziellen Statistiken der easyCredit BBL, Daten, Rekorde uvm. gibt es auf easyCredit-BBL.de! Und für unterwegs: die neue offizielle Liga-App, kostenfrei für iOS und Android.



MAGENTASPORT.DE

Keinen Korb mehr verpassen - Alle Spiele der easyCredit Basketball Bundesliga und des MagentaSport BBL Pokals live auf MagentaSport.de

LEGEND
 Min Minutes Played DR Defensive Rebounds AS Assists BS Blocked Shots PF Fouls +/- Plus-Minus-Rating
 DNP Did Not Play OR Offensive Rebounds ST Steals SB Shots Blocked FD Fouls Drawn * Starters
 PTS Points TR Total Rebounds TO Turnovers EFF Efficiency = ((PTS + TR + AS + ST + BS) - ((FGA - FGM) + (FTA - FTM) + TO))