

Referee: CICI Gentian  
 Umpires: STREIT Enrico / BRENDEL Nicolas  
 Commissioner: MOLITOR Horst

Attendance: 1.819  
 Heidelberg, SNP DOME (5.000 Plätze), SA 23 APR 2022, 18:00, Game-ID: 26222

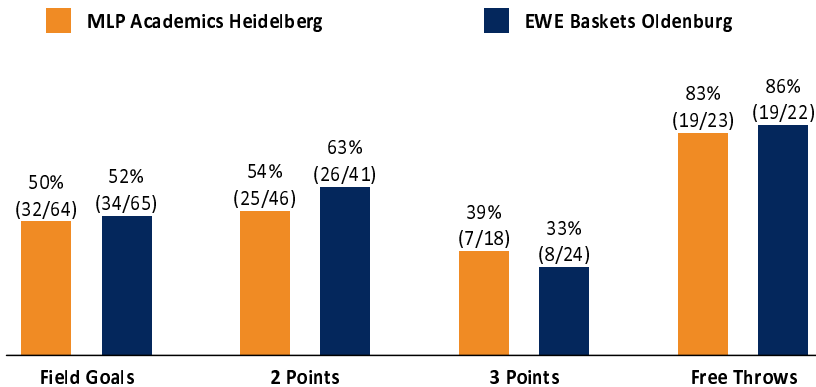
	Q1		Q2		Q3		Q4	
HDB	22	22	24	46	32	78	12	90
OLD	26	26	22	48	17	65	30	95

**HDB - MLP Academics Heidelberg** (Coach: IGNIATOVIC Branislav)

No.	Name	Min	PTS	2 Points	3 Points	Field Goals	Free Throws	OR	DR	TR	AS	ST	TO	BS	SB	PF	FD	EFF	+/-	
0	WATKINS Anthony		DNP																	
*1	CHAPMAN Brekkott	26:13	12	2/3 (67%)	2/4 (50%)	4/7 (57%)	2/4 (50%)		6	6		1	2			3	2	12	-10	
*2	WÜRZNER Niklas	24:17	4	1/3 (33%)		1/3 (33%)	2/2 (100%)				8		1		1	1	2	9	-13	
*5	ELY Shyron	26:42	20	6/7 (86%)	2/2 (100%)	8/9 (89%)	2/2 (100%)	1		1	1	1			1	5	1	22	-4	
*8	UGRAI Maximilian	25:34	10	3/8 (38%)		3/8 (38%)	4/4 (100%)	2	4	6		2			1	4	3	13	-4	
10	MARTIN Kelvin	21:53	5	2/4 (50%)		2/4 (50%)	1/2 (50%)		1	1	1	1	2		2	3	4	3	-1	
*15	GEIST Jordan	28:54	17	4/11 (36%)	2/7 (29%)	6/18 (33%)	3/3 (100%)	2	6	8	2	1	2		1	2	6	14	5	
22	HEYDEN Phillip	2:40	2	0/1 (0%)		0/1 (0%)	2/2 (100%)		1	1						1	1	2	-4	
29	OSAGHAE Osasumwen	6:55	6	3/3 (100%)		3/3 (100%)		1	2	3								9	7	
30	FRIEDERICI Leon	9:31	1				1/2 (50%)						2			1	1	-2	10	
47	KUPPE Albert		DNP																	
55	ANDERSON Kyan	27:21	13	4/6 (67%)	1/5 (20%)	5/11 (45%)	2/2 (100%)		2	2	2	3	2		2		3	12	-11	
Team / Coach									2	2			1					1		
Totals		200:00	90	25/46 (54%)	7/18 (39%)	32/64 (50%)	19/23 (83%)	6	24	30	14	9	12		8	20	23	95	-5	

**OLD - EWE Baskets Oldenburg** (Coach: FREYER Ingo)

No.	Name	Min	PTS	2 Points	3 Points	Field Goals	Free Throws	OR	DR	TR	AS	ST	TO	BS	SB	PF	FD	EFF	+/-
*3	HEIDEGGER Max	23:45	13	5/7 (71%)	1/3 (33%)	6/10 (60%)					2	1	3			5	1	9	-9
7	HERRERA Sebastian	24:52	10	1/2 (50%)	2/6 (33%)	3/8 (38%)	2/2 (100%)	1		1		3	2			2	1	7	10
*11	PRESSEY Phil	31:46	15	3/5 (60%)	2/5 (40%)	5/10 (50%)	3/3 (100%)	1	4	5	7	2	2			2	4	22	1
*20	MICHALAK Michal	29:18	13	3/7 (43%)	1/3 (33%)	4/10 (40%)	4/4 (100%)	2	5	7	3	1	2	2		3	2	18	15
*22	HOLYFIELD T.J.	22:33	8	4/6 (67%)	0/1 (0%)	4/7 (57%)		1	2	3	1		2	2		3		9	9
23	PAULDING Rickey	14:34	2	1/1 (100%)	0/3 (0%)	1/4 (25%)		1	1	2	1		2			2		0	-9
24	NDHINE Jerry		DNP																
27	HEMSCHMEIER Fritz		DNP																
33	HUNDT Bennet	16:53	7	1/1 (100%)	1/2 (50%)	2/3 (67%)	2/2 (100%)		4	4	5	1	1			3	4	15	20
35	PIANIC Alen	19:06	12	3/4 (75%)	1/1 (100%)	4/5 (80%)	3/5 (60%)	2	2	4	1	1				3	15	-13	
*50	LYNCH Reggie	17:13	15	5/8 (63%)		5/8 (63%)	5/6 (83%)		4	4	1			4		3	5	20	1
Team / Coach									2	2						1		2	
Totals		200:00	95	26/41 (63%)	8/24 (33%)	34/65 (52%)	19/22 (86%)	8	24	32	21	9	14	8		24	20	117	5



HDB	Rebounds OR/DR/TR	OLD
6 / 24 / 30	Assists	8 / 24 / 32
14	Fouls	21
20	Fouls Drawn	24
23	Turnovers	20
12	Steals	14
9	Points in the Paint	9
36	Second Chance Points	48
7	Fast Break Points	7
10	Biggest Lead	6
14 (79:65)	Biggest Scoring Run	8 (10:18)
13-0 (59:50)	Lead Changes:	11-0 (82:86)
	Times Tied:	5
		9


**EASYCREDIT-BBL.DE**

Alle offiziellen Statistiken der easyCredit BBL, Daten, Rekorde uvm. gibt es auf easyCredit-BBL.de! Und für unterwegs: die neue offizielle Liga-App, kostenfrei für iOS und Android.


**MAGENTASPORT.DE**

Keinen Korb mehr verpassen - Alle Spiele der easyCredit Basketball Bundesliga und des MagentaSport BBL Pokals live auf MagentaSport.de

**LEGEND**  
 Min Minutes Played    DR Defensive Rebounds    AS Assists    BS Blocked Shots    PF Fouls    +/- Plus-Minus-Rating  
 DNP Did Not Play    OR Offensive Rebounds    ST Steals    SB Shots Blocked    FD Fouls Drawn    \* Starters  
 PTS Points    TR Total Rebounds    TO Turnovers    EFF Efficiency = ((PTS + TR + AS + ST + BS) - ((FGA - FGM) + (FTA - FTM) + TO))